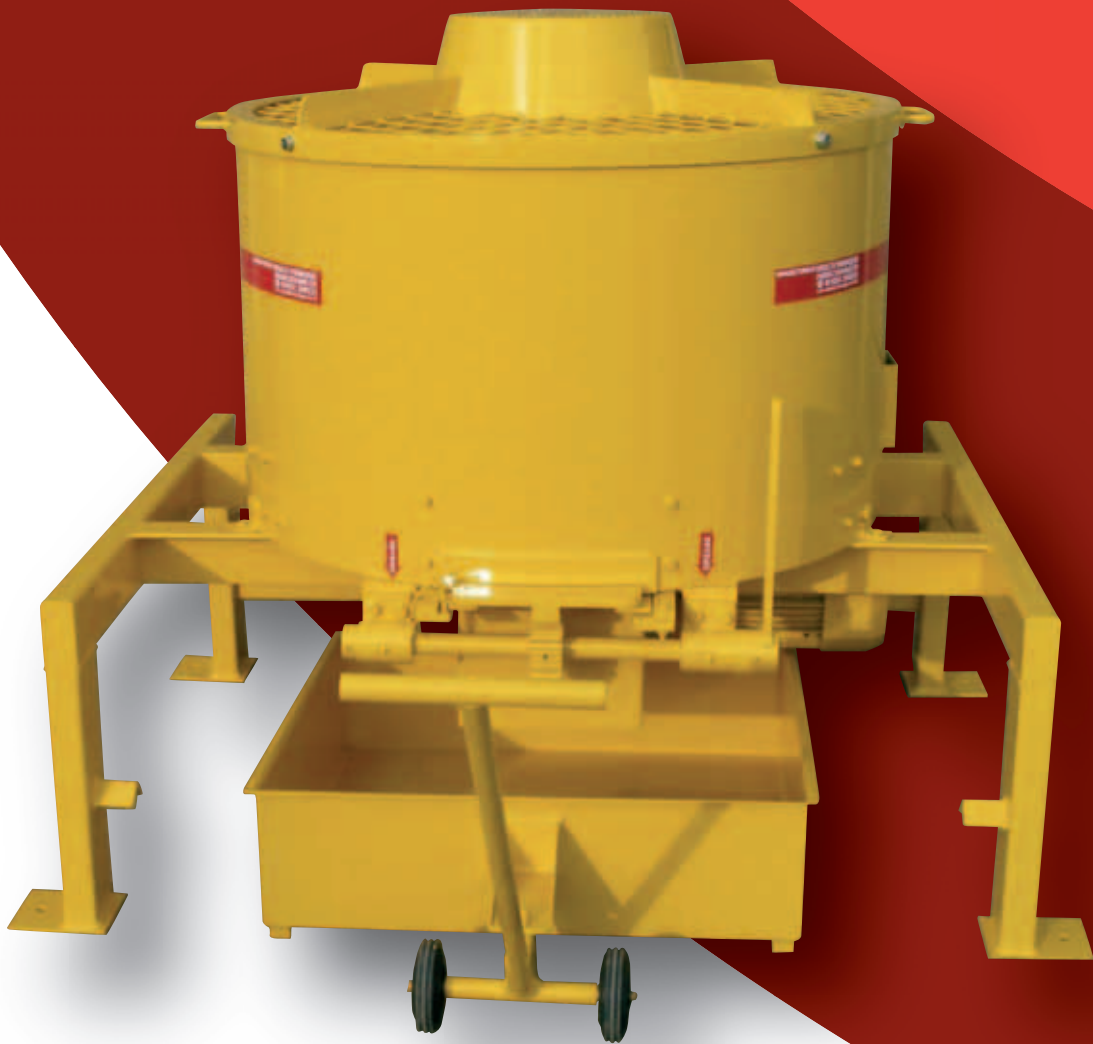
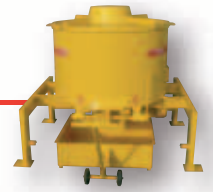


LINER ROLPANIT FE100



LINER ROLPANIT FE100

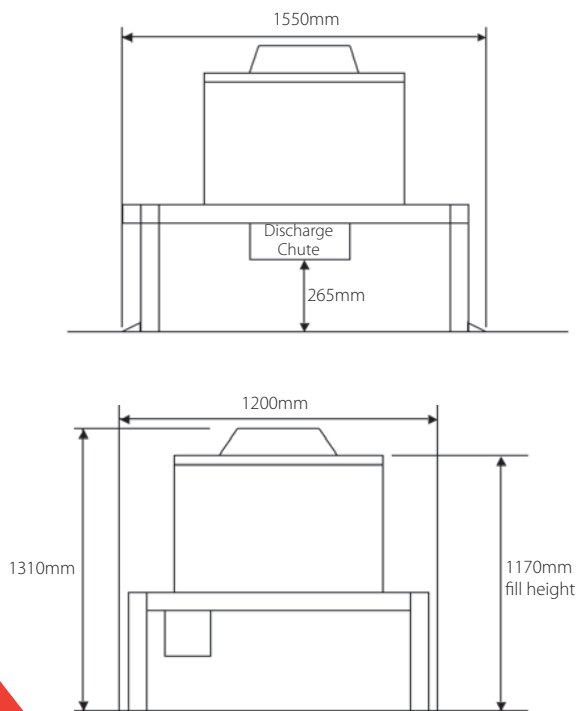
LINER ROLPANIT FE100



Features

- ◆ Manufactured utilising heavy duty materials throughout to ensure a long and reliable working life
- ◆ Crushing and kneading action make the Rolpanit ideal for lime mortars and plasters.
- ◆ Excellent for recycling old mortars and plasters.
- ◆ Suitable for mixing semi dry concrete and screeds
- ◆ Can be used for mixing wet concrete with rollers raised or removed
- ◆ Low filling height

Dimensions



Weight: 600 Kg

Specifications

Capacity	100 Litres (4 cu ft) unmixed
Mixing Pan	1000mm diameter with 15mm. Base Plate & renewable rim wear plates
Mixing Blades	Renewable mixing blades on adjustable fingers
Rollers	Heavy fabricated rollers and saddle. Height adjustable to 40mm from pan base.
Roller Compression Springs	Heavy duty compression springs increase the effective weight of the rollers
Power Unit	Modern 2.2 kw 415 volt 3-phase IP55 electric motor.
Drive	Direct drive through worm and gear heavy duty gearbox.
Bearings	Heavy duty bearings throughout.
Chassis	Strong hollow section welded chassis on four legs.
Guards	Fully guarded to the latest HSE & CE standards
Options	Liner Mortamover Mortar Pans designed to fit under the low discharge point.

Manufactured by Multi Marque Production Engineering Ltd

Unit 33, Monckton Industrial Estate, Wakefield, West Yorkshire, United Kingdom, WF2 7AL

T: +44 (0)1924 290231

F: +44 (0)1924 382241

W: www.multi-marque.co.uk

E: enquiries@multi-marque.co.uk